

HOLIDAY

written by Cheryl Fenton

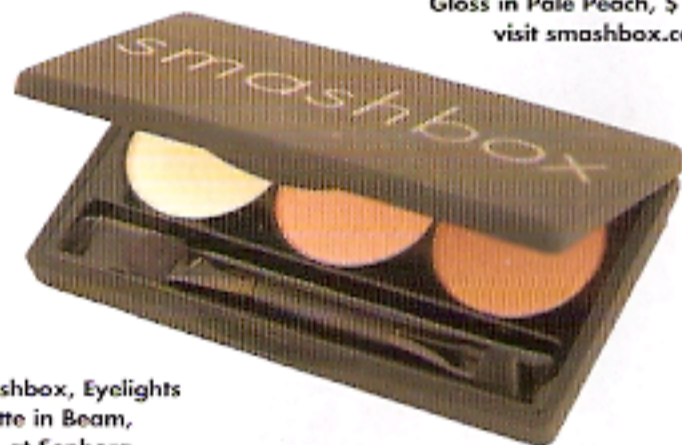
faces

MAKEUP FOR EVERY OCCASION

Create the right look for any holiday event.



Smashbox, Lip Enhancing Gloss in Pale Peach, \$18, visit smashbox.com



Smashbox, Eyelights Palette in Beam, \$34, at Sephora

OFFICE PARTY

Even if celebrating is the business at hand, it's still important to remain business casual. So let loose (though not too loose) by keeping your makeup subtle but introducing a bit of fun. Hutchinson suggests utilizing your daytime palette but focusing instead on depth and stronger highlights.

To take a 9-to-5 look into after hours, apply a gel blush for a sheer wash of healthy color. Next, sweep an extra touch of highlighting color across your lids and use a thickening mascara to lengthen and shape your lashes. For lips, layer gloss over your daytime lipstick to add dimension.



Napoleon Perdis, Barely Blushing, \$19, at Sephora

beauté ocean

Clinique, Long Last Soft Shine Lipstick in Red Red Red, \$14, at Bloomingdale's, Fashion Island

Sephora Brand, Deluxe Lash Placement Kit, \$18, visit sephora.com



Dior, Liquid Style Liner, \$30, visit sephora.com

STYLE LINER
INTENSITÉ ÉCLAT
INTENSE
LIQUID EYELINER
Dior

BLACK-TIE DINNER

For a formal affair, think old Hollywood glam—a time when one come-hither glance from a silver-screen siren could stop the world.

The thick stroke of black liquid liner that this dramatic eye requires might seem intimidating to apply. Nervous hands can draw pencil liner close to the lash line then trace with liquid. But always finish up with a tiny wing on the outer corner of the eye. And if you've always wanted to dabble with faux fringes, now's the time. Remember to wait 15 to 20 seconds after applying the glue to the false lash before pressing it into place.

Rather keep it real? Clumpy spider eyes and Cleopatra wannabes need not apply. Stay classic with a primer and mascara to extend natural lashes.

When you want your lips to do the talking without saying a word, go with a classic color and keep eyes natural. "Red lips are always great with a black dress," says Jerry Hutchinson, a Sephora Pro Beauty Team expert. To apply, outline your lips with a matching pencil. Using your finger, pat on the red lipstick or stain. Finish with a touch of gloss for the ultimate in shine.

If your dark gown has left you feeling a little pale, dust bronzer under the chin and on your neck and décolletage.



©GRANDY BROOKE/WIREIMAGE.COM



COCKTAIL PARTY

What better stage for showing off your sexy side than a soirée where martinis are the main course? Be flirty: Light up your eyes in jewel tones, rich plums and deep blues in either a sparkle or matte shadow.

To achieve this daring look, apply the darkest shadow from the lash line to the crease, the medium shadow in the crease, and the lightest shadow directly under the brow bone for a gentle highlight. Then, using a clean brush, blend blend blend. Follow with a smoky liner and mascara. For a quick flash of frivolity, sweep a lighter-colored mascara color—maybe a plum or silver—just on the tips of your upper lashes. All that's left, then, is a neutral lipgloss with tons of shine, and the swizzle sticks won't be the only thing causing a stir.



Laura Geller, Line & Define Mascara in Plum, \$19.50, visit sephora.com



M&A-C, Eye Shadow Pigment in Copper Sparkle, \$19.50, at Macy's



Clinique, True Black Brush-On Cream Liner, \$14.50, at Nordstrom, South Coast Plaza





NARS, The Multiple in South Beach, \$36.50, at Bloomingdale's



SEPHORA
FPS15, SPF15
non-gras • oil free
vitamine E • vitamin E



Laura Mercier, Shimmer Block in Golden Mosaic, \$38, at Saks Fifth Avenue

FAMILY GET-TOGETHER

The last thing you want at a family get-together is too much drama—with either relations or makeup.

"Makeup at a family party should remain fresh, not overdone," says Hutchinson. Try keeping the eyes pretty by shaping them with a muted brown eyeliner and a single coat of mascara. "It's also likely you'll be taking lots of pictures, so a makeup primer is a must for all-day beauty."

A comfortable setting like a family gathering is also the perfect opportunity for focusing on your skin, according to celebrity makeup artist Susie Jasper, who has painted the faces of lovelies such as Demi Moore, Sarah Jessica Parker and Nicole Kidman. Keep it creamy and beautiful with a tinted moisturizer and light bronzer. Peachy cheeks and lightly colored lips finish the look.



©SGP ITALIA/WIREIMAGE.COM

BRUNCH

"What a wonderful time to incorporate beautiful colors into your makeup," says Jasper.

"Since it's a daytime event, apply your foundation lightly," she suggests. Wet your sponge first, then dip it into the foundation to help it go on much lighter. "Powder lightly and don't forget a pop of color on the cheeks to wake up your skin."

A fresh face is the perfect canvas for feminine pinks, beautiful greens or plum hues. Begin with a highlighting color on the brow bone and on the inside corner of the eye. Then lightly brush a very neutral but slightly darker shade into the crease of the eye. Work an accenting eyeliner into the base of the lashes, brush on a few sweeps of mascara and add a neutral lip color—you're ready for a mimosa.



Benefit, Silky Powder Eye Shadow in Soft Shoulder, \$18, visit benefitcosmetics.com

Stila, Fall in Love Eye Shadow Trio in Cedar Grove, \$30, at Sephora



Benefit, Realness of Concealness, \$28, at Sephora